



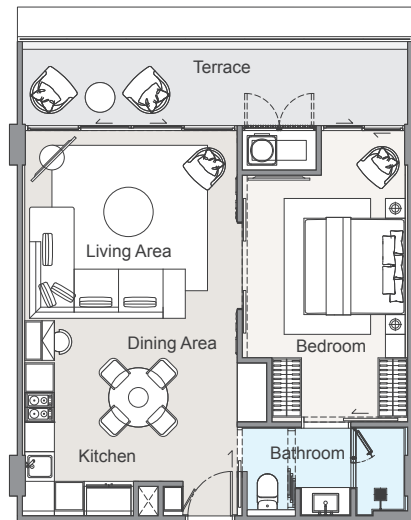


1B

Internal area : 62 m²
 External area : 13 m²
 Total area : 75 m²



 1-Bedroom
 1-Bathroom



 1-Living & dining area
 1-Private terrace

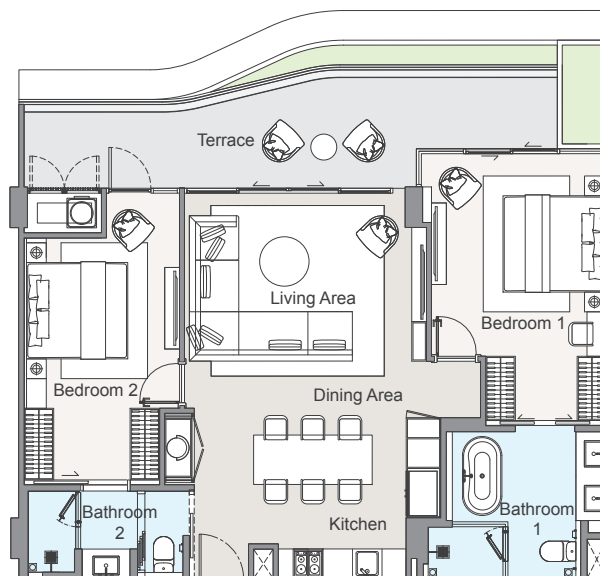


2B-1

Internal area : 96 m²
 External area : 25 m²
 Total area : 121 m²


 2-Bedrooms
 2-Bathrooms

 1-Living & dining area
 1-Private terrace



2B-2

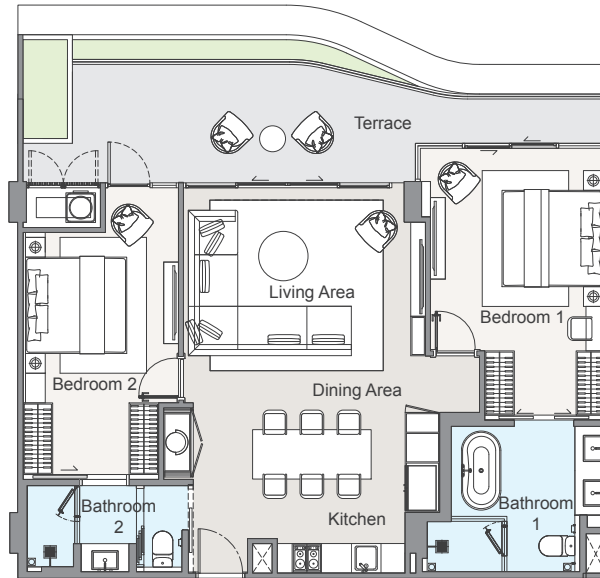
Internal area : 96 m²
 External area : 25 m²
 Total area : 121 m²

 2-Bedrooms

 2-Bathrooms

 1-Living & dining area


 1-Private terrace




2B-3

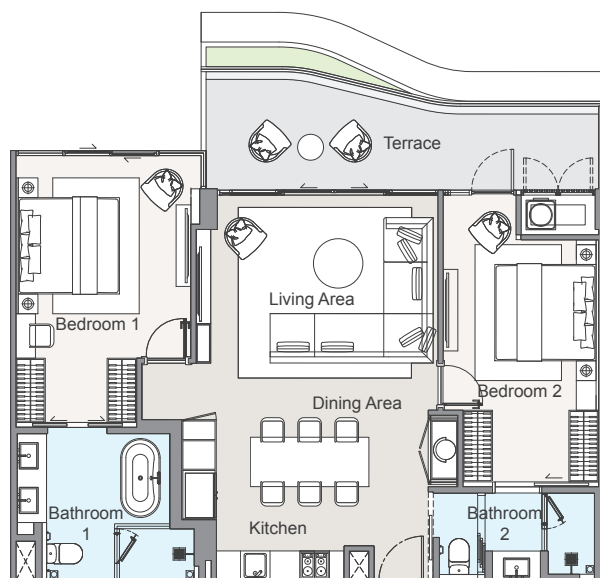
Internal area : 96 m²
 External area : 17 m²
 Total area : 113 m²

 2-Bedrooms

 2-Bathrooms




 1-Living & dining area



 1-Private terrace

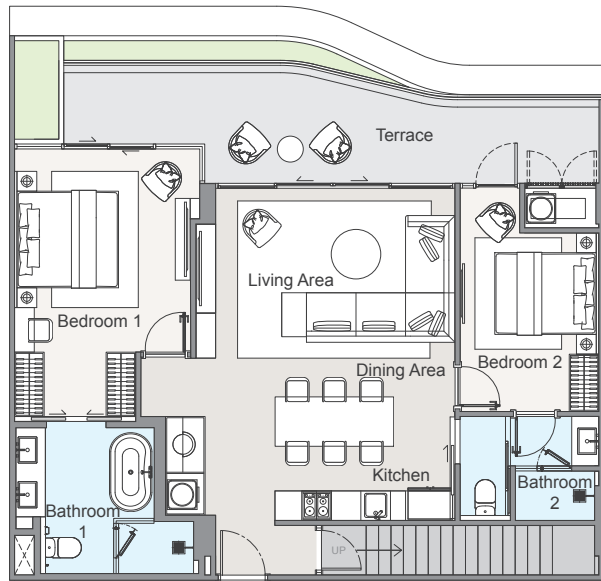


2B-4 PENTHOUSE

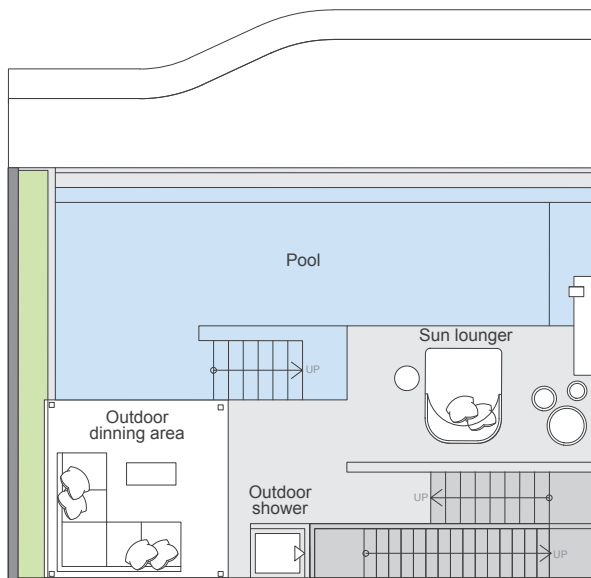
Internal area	:	96 m ²
External area (Lower floor)	:	25 m ²
External area (Rooftop floor)	:	58 m ²
Pool	:	30 m ²
Total area	:	209 m ²

-  2-Bedrooms
-  2-Bathrooms
-  1-Living & dining area

-  2-Private terraces
-  1-Private pool



LOWER FLOOR

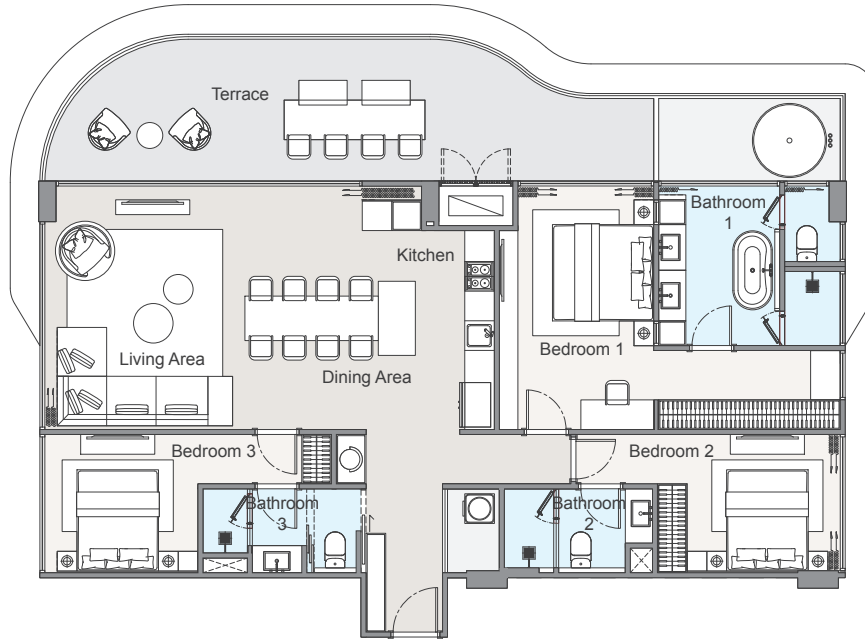


ROOFTOP FLOOR

3B-1

Internal area : 127 m²
 External area : 36 m²
 Total area : 163 m²

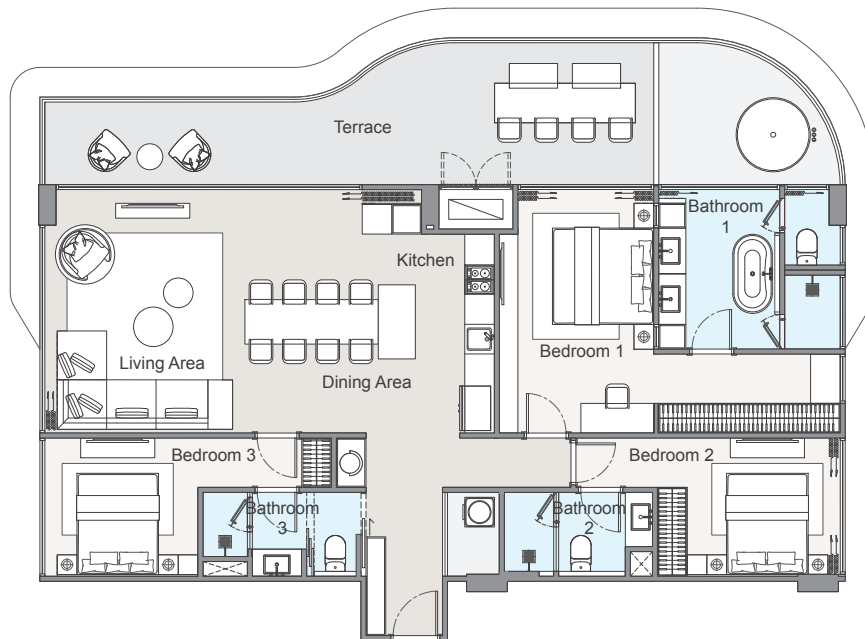
-  3-Bedrooms
-  3-Bathrooms
-  1-Living & dining area
-  1-Private terrace



3B-2

Internal area : 127 m²
 External area : 36 m²
 Total area : 163 m²


-  3-Bedrooms
-  3-Bathrooms
-  1-Living & dining area
-  1-Private terrace



3B-3

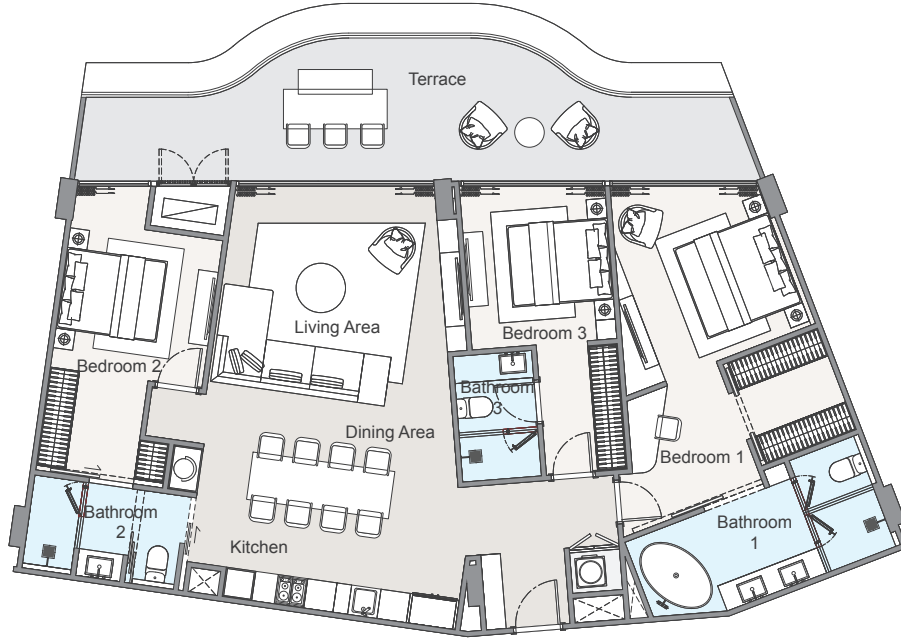
Internal area : 136 m²
External area : 29 m²
Total area : 165 m²

 3-Bedrooms

 3-Bathrooms

 1-Living & dining area

 1-Private terrace




3B-4

Internal area : 136 m²
External area : 31 m²
Total area : 167 m²

 3-Bedrooms

 3-Bathrooms

 1-Living & dining area

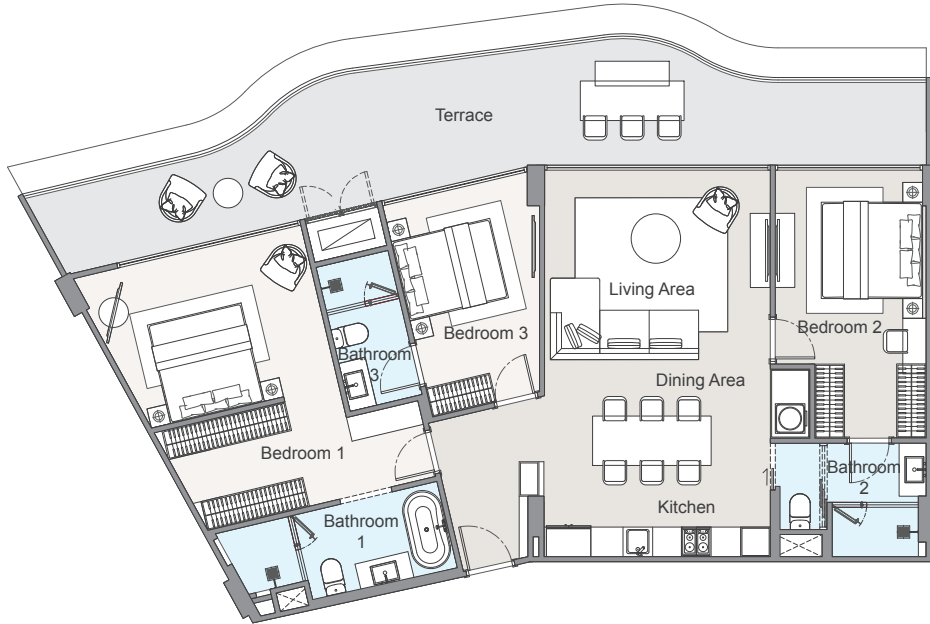
 1-Private terrace



3B-5




Internal area : 121 m²
 External area : 37 m²
 Total area : 158 m²

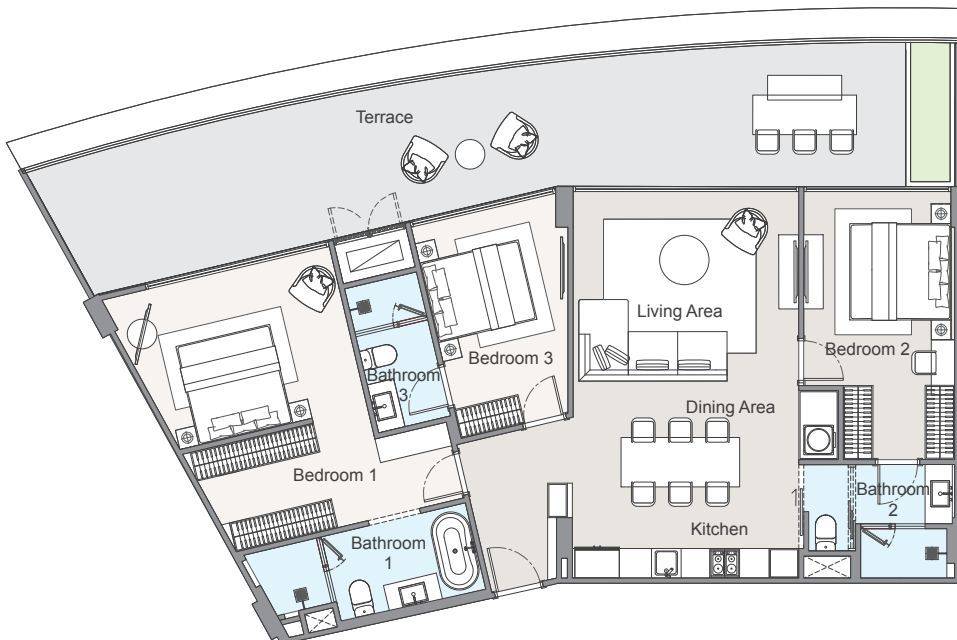
-  3-Bedrooms
-  3-Bathrooms
-  1-Living & dining area
-  1-Private terrace



3B-6

Internal area : 121 m²
 External area : 50 m²
 Total area : 171 m²

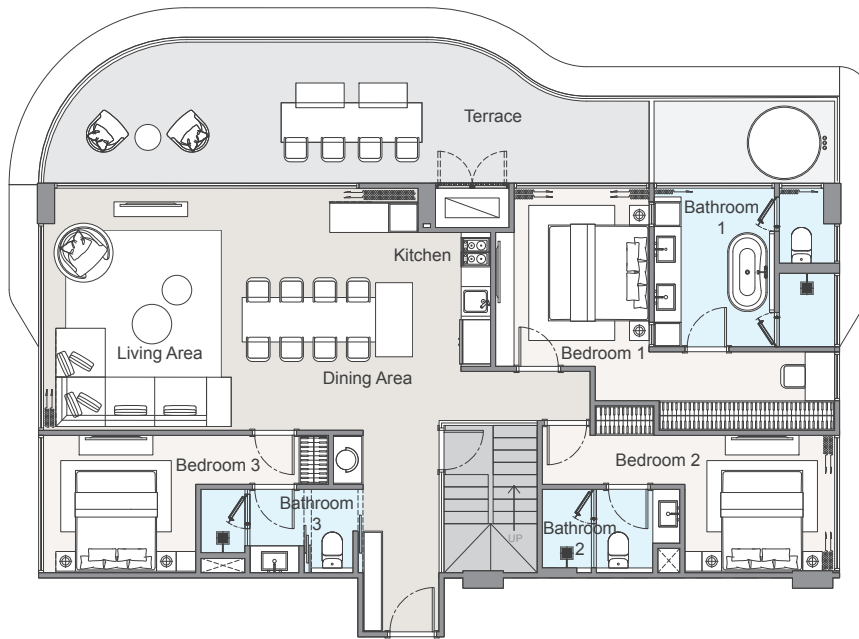
-  3-Bedrooms
-  3-Bathrooms
-  1-Living & dining area
-  1-Private terrace



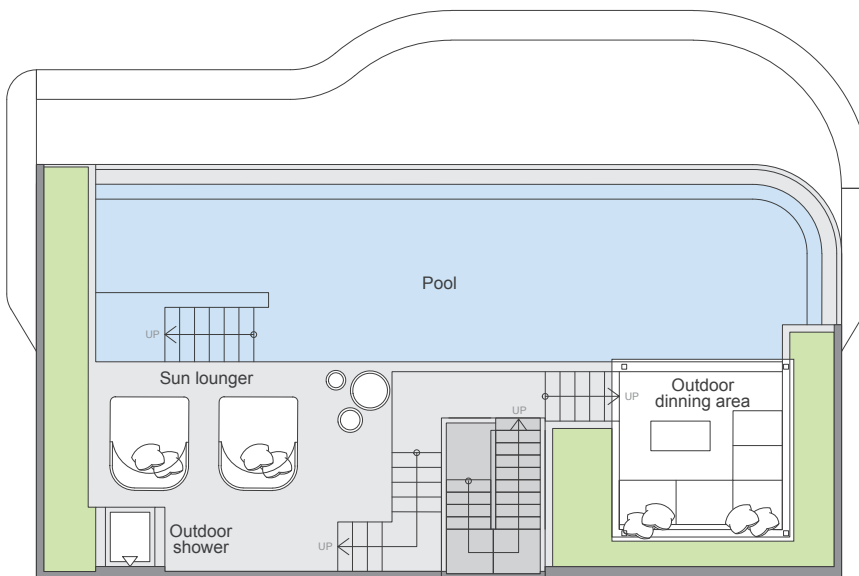
3B-7 PENTHOUSE

Internal area	: 127 m ²
External area (Lower floor)	: 36 m ²
External area (Rooftop floor)	: 76 m ²
Pool	: 47 m ²
Total area	: 286 m ²

-  3-Bedrooms
-  3-Bathrooms
-  1-Living & dining area
-  2-Private terraces
-  1-Private pool






LOWER FLOOR





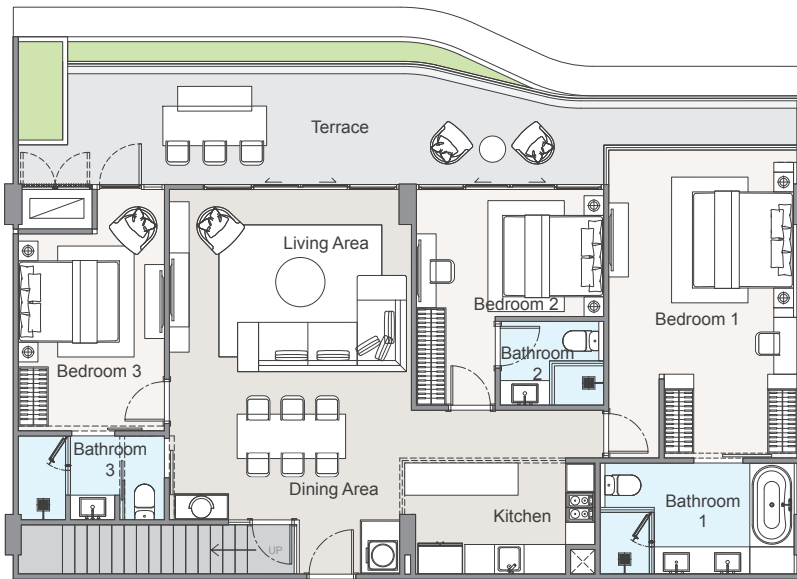
ROOFTOP FLOOR

3B-8 PENTHOUSE

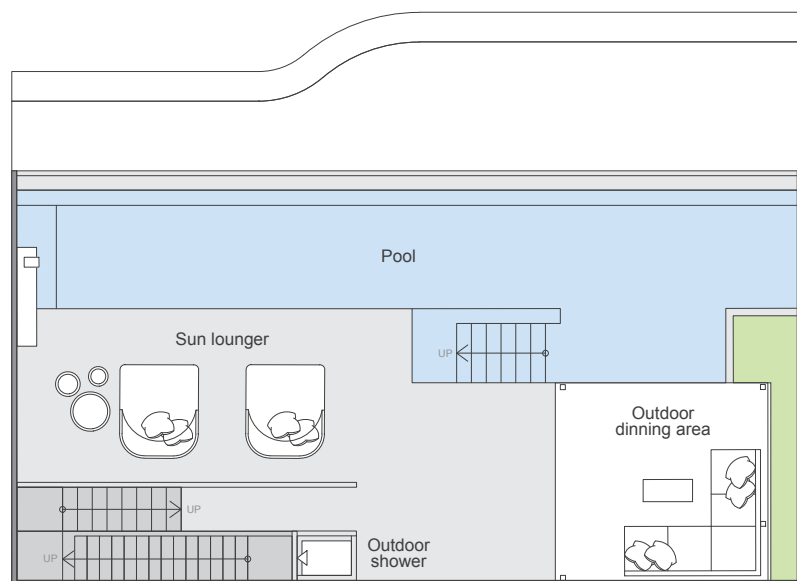
Internal area	: 127 m ²
External area (Lower floor)	: 35 m ²
External area (Rooftop floor)	: 87 m ²
Pool	: 36 m ²
Total area	: 285 m ²

-  3-Bedrooms
-  3-Bathrooms
-  1-Living & dining area

-  2-Private terraces
-  1-Private pool



LOWER FLOOR

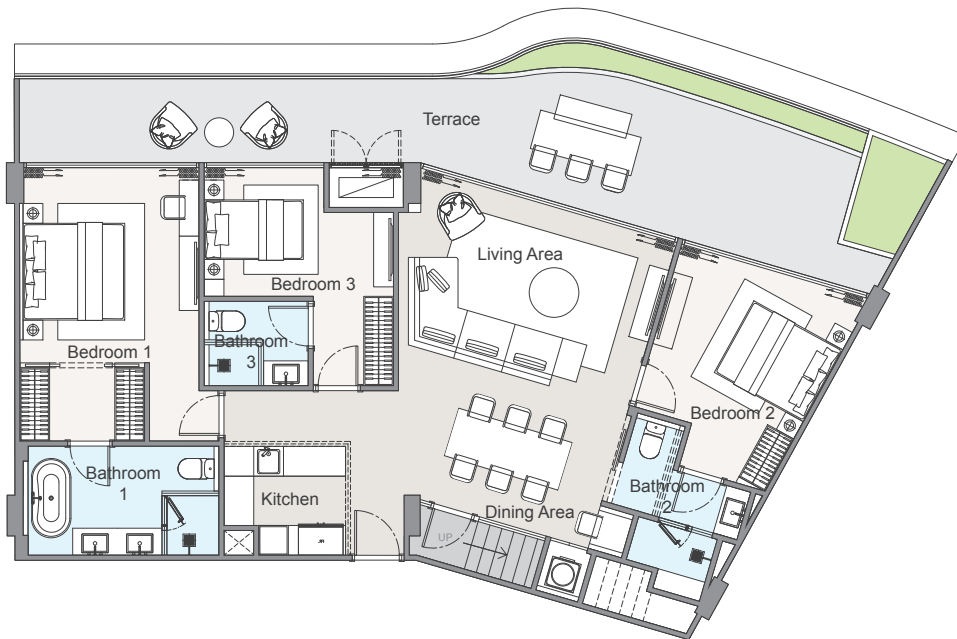


ROOFTOP FLOOR

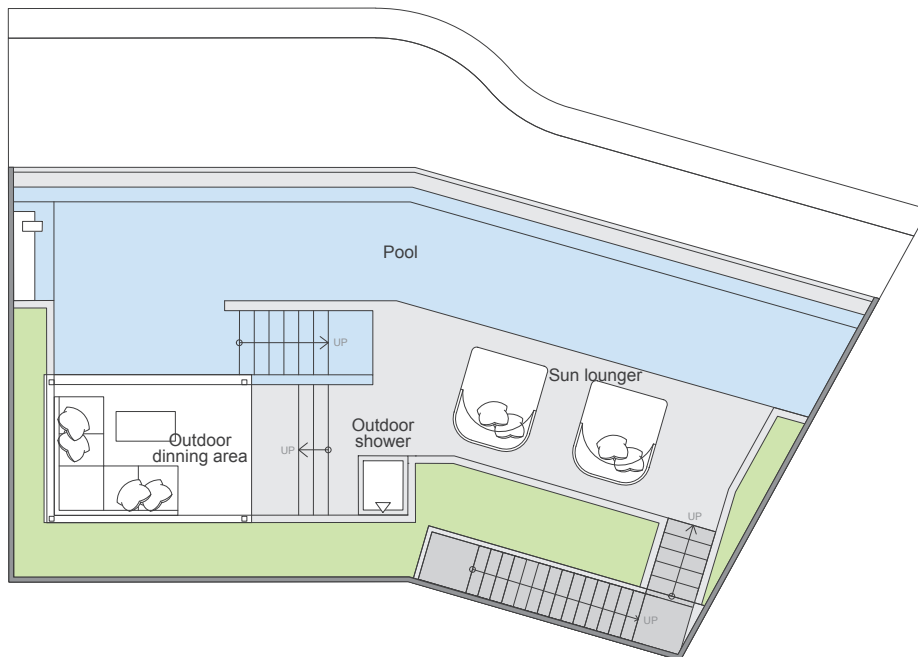
3B-9 PENTHOUSE

-  3-Bedrooms
-  3-Bathrooms
-  1-Living & dining area
-  2-Private terraces
-  1-Private pool

Internal area	:	121 m ²
External area (Lower floor)	:	43 m ²
External area (Rooftop floor)	:	66 m ²
Pool	:	52 m ²
Total area	:	282 m ²



LOWER FLOOR



ROOFTOP FLOOR

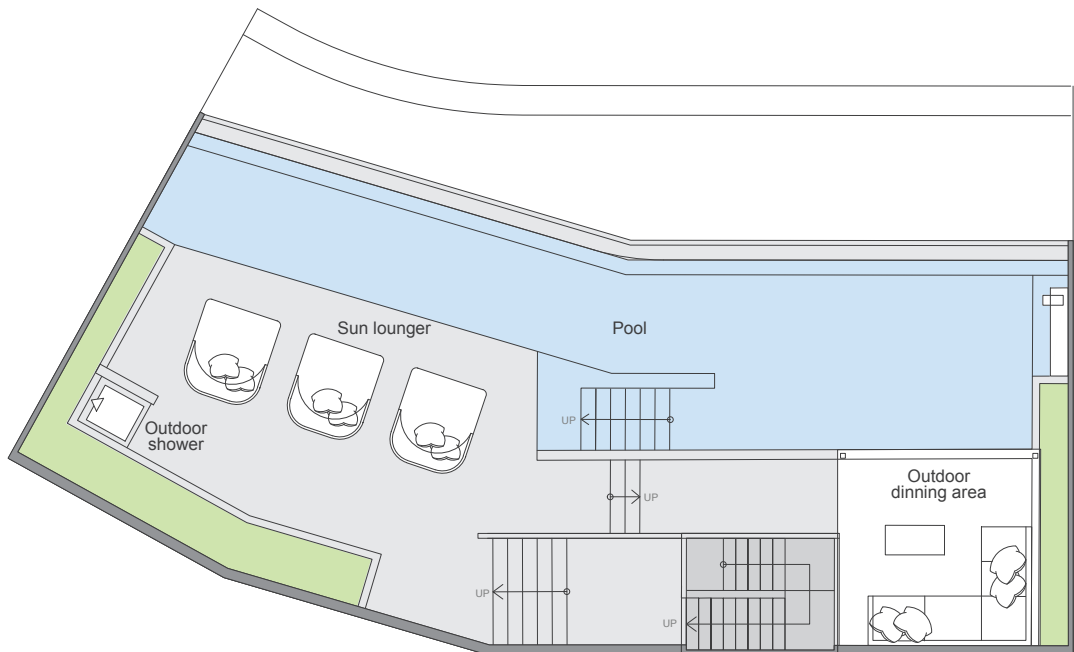
3B-10 PENTHOUSE

Internal area	: 160 m ²
External area (Lower floor)	: 41 m ²
External area (Rooftop floor)	: 100 m ²
Pool	: 57 m ²
Total area	: 358 m ²

-  3-Bedrooms
-  3-Bathrooms
-  1-Living & dining area
-  2-Private terraces
-  1-Private pool



LOWER FLOOR



ROOFTOP FLOOR